

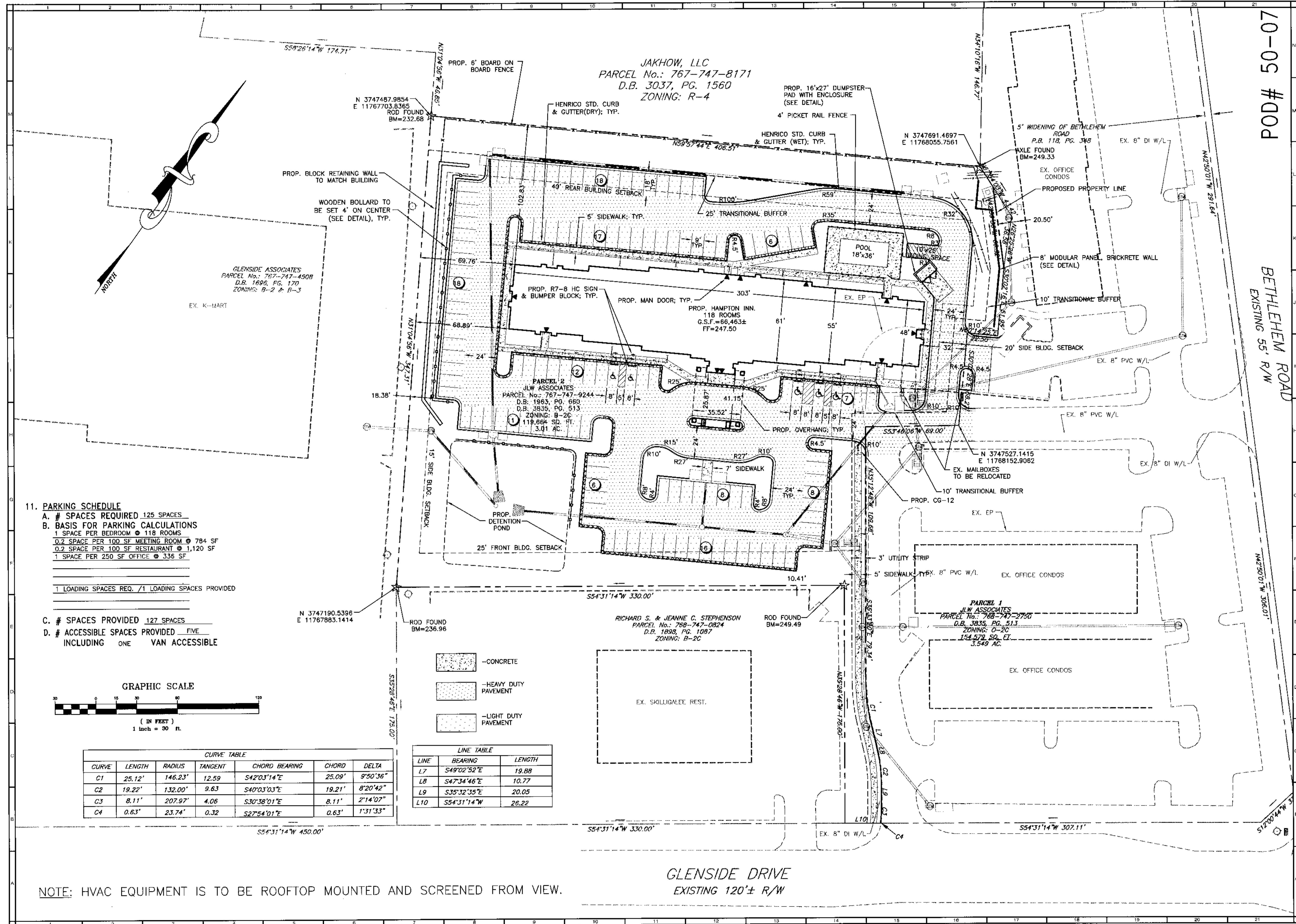


• PLANNERS • ARCHITECTS
 • ENGINEERS • SURVEYORS
 1208 Corporate Circle
 Roanoke, Virginia 24018
 Phone: 540/772-9550
 FAX: 540/772-8050
 501 Branchway Road
 Suite 100
 Richmond, Virginia 23236
 Phone: 804/794-0571
 FAX: 804/794-2635
 580 Technology Park Drive
 Suite 200
 Glen Allen, Virginia 23059
 Phone: 804/553-0132
 FAX: 804/553-0133

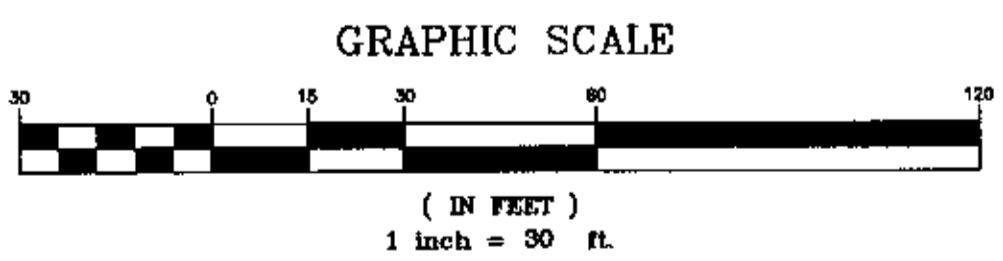
HAMPTON INN & SUITES
 LAYOUT PLAN
 Brookland District
 Henrico County, Virginia

DRAWN BY: LTB
 DESIGNED BY: SMM
 CHECKED BY: JLS
 DATE: June 08, 2007
 REVISIONS:
 August 08, 2007

SCALE: 1"=30'
 SHEET NO.
C03
 H0600159.00



- 11. PARKING SCHEDULE**
- A. # SPACES REQUIRED 125 SPACES
 - B. BASIS FOR PARKING CALCULATIONS
 - 1 SPACE PER BEDROOM @ 118 ROOMS
 - 0.2 SPACE PER 100 SF MEETING ROOM @ 784 SF
 - 0.2 SPACE PER 100 SF RESTAURANT @ 1,120 SF
 - 1 SPACE PER 250 SF OFFICE @ 336 SF
 - C. # SPACES PROVIDED 127 SPACES
 - D. # ACCESSIBLE SPACES PROVIDED FIVE INCLUDING ONE VAN ACCESSIBLE



CURVE TABLE

CURVE	LENGTH	RADIUS	TANGENT	CHORD BEARING	CHORD	DELTA
C1	25.12'	146.23'	12.59	S42°03'14"E	25.09'	9°50'36"
C2	19.22'	132.00'	9.63	S40°03'03"E	19.21'	8°20'42"
C3	8.11'	207.97'	4.06	S30°38'01"E	8.11'	2°14'07"
C4	0.63'	23.74'	0.32	S27°54'01"E	0.63'	1°31'33"

- CONCRETE
- HEAVY DUTY PAVEMENT
- LIGHT DUTY PAVEMENT

LINE TABLE

LINE	BEARING	LENGTH
L7	S49°02'52"E	19.88
L8	S47°34'46"E	10.77
L9	S35°32'35"E	20.05
L10	S54°31'14"W	26.22

NOTE: HVAC EQUIPMENT IS TO BE ROOFTOP MOUNTED AND SCREENED FROM VIEW.

GLENSIDE DRIVE
 EXISTING 120'± R/W

70-05 POD # 50-07
 BETHLEHEM ROAD
 EXISTING 55' R/W